

Massive supply of quality housing

Tama New Town



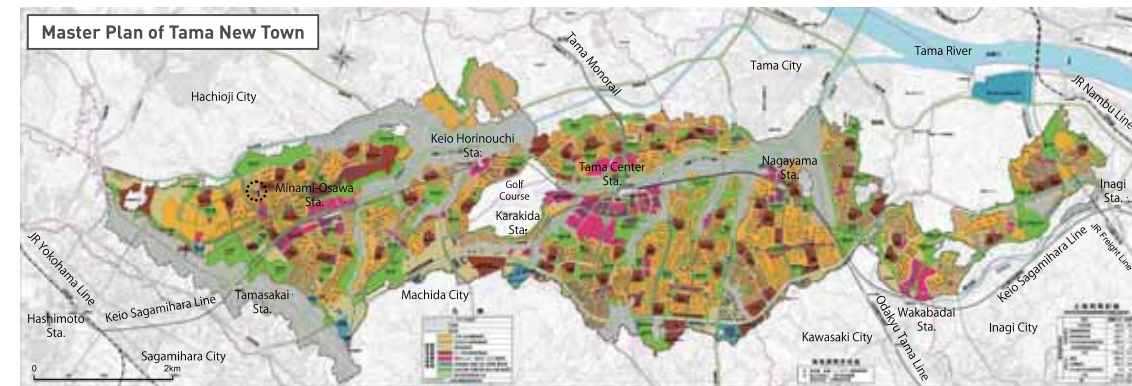
Tsurumaki and Ochiai districts, Tama New Town

Tama New Town, the construction of one of the largest (approx. 2,900ha) new town development projects in Japan, was launched in 1965. The project was launched in the Tama area, about 20-30km from the heart of Tokyo, aiming to form a designed urban housing area and a mass supply of quality housing, in order to solve the lack of housing and urban sprawl which became a serious issue in Tokyo due to the over-concentration of population and industries in the city during the period of rapid economic growth. UR contributed in instituting the masterplan, implementing the extensive area development project of approx. 1,400ha, and supplying housing etc.. Today the town has grown into a city of approx. 90,000 households and a population of approx. 220,000.

Locations : Inagi City, Tama City, Hachioji City and Machida City, Tokyo Site area : Approx. 2,900ha



One of the leafy rental housing complexes constructed and managed by UR [Nagayama Housing Complex, 3,253 housing units]



Legend			
	New town area border		Municipal border
	Commercial/municipal services, etc.		Houses
	Educational facilities		Houses, attracted facilities, etc.
	Parks/greenery area		Attracted facilities, etc.
	Water facilities, waste disposal centers, etc.		Others (housing lots on sale, etc.)

- Project coordination
- Environmental symbiosis
- Land acquisition
- Infrastructure development



Japan
 Townscape Award 2001 [Category: Beautiful Streetscape] [Live Nagaïke District]
 Townscape Award 1999 [Category: Townscape Planning Case Example [District Level]] [Karakida District]
 Townscape Award 1995 [Category: Best 100 Townscapes] [Fine Hill Inagi Koyodai district]
 The 15th Green City Award 1995 [Category: Community Greening [Minister of Construction Award]] [Live Nagaïke Seseragi Plan]
 Japan Institute of Landscape Architecture [JILA] Award 1993 [Category: Special Prize] [B3 district]
 Japan Institute of Landscape Architecture [JILA] Award 1985 [Category: Research & Planning] [Tsurumaki & Ochiai districts]