

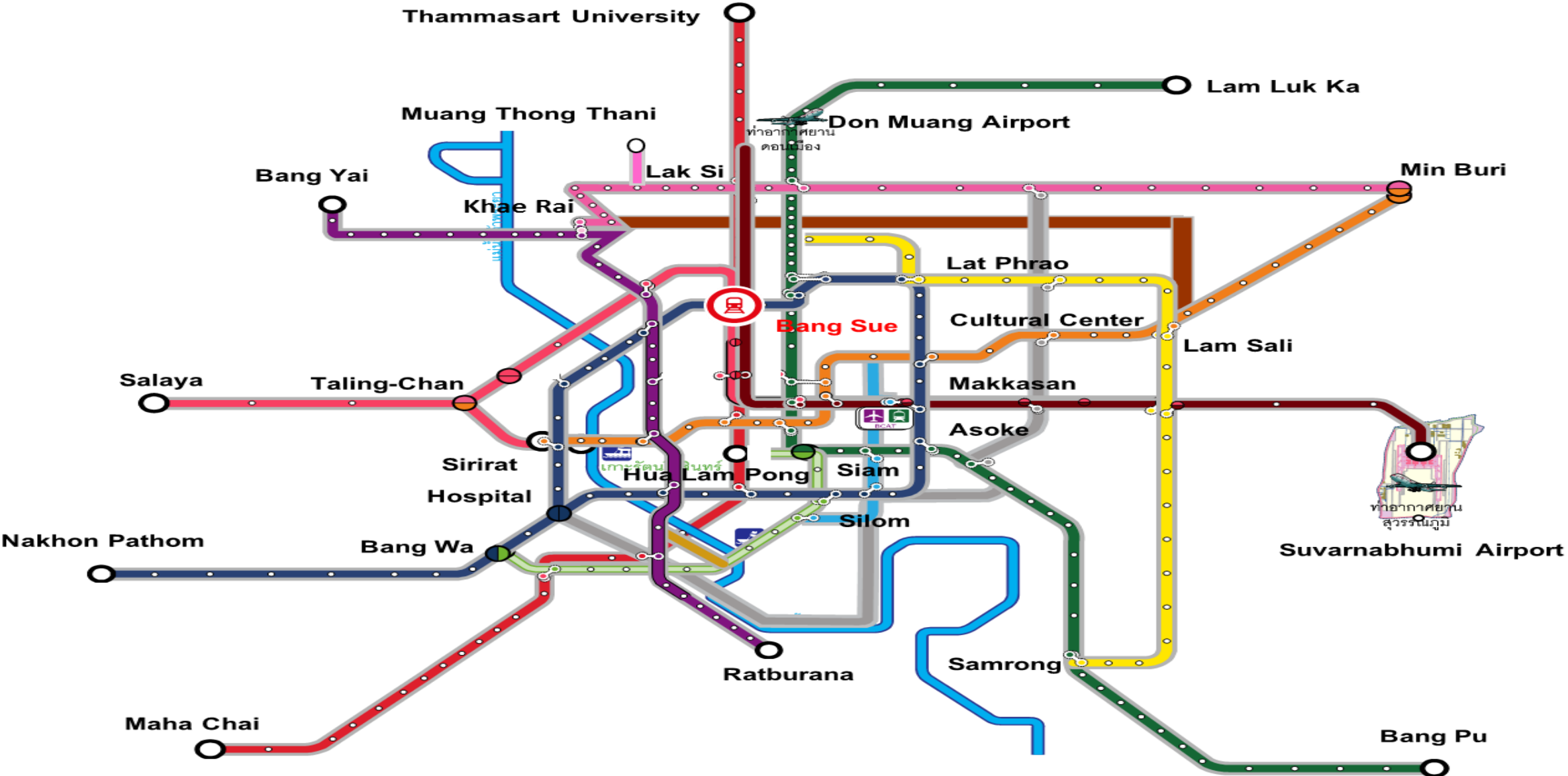


Bang Sue Area

The New CBD & Transport Center



New Transport Center



Various Transport System

Pedestrian , Cycling , BRT
Metro , CT , HSR

Skywall

BRT



Metro/Rail
Station

Metro
(Green Line)

Metro - Underground
(Blue Line)

CT / HSR



372 Hectares

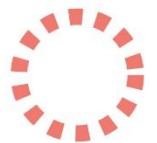
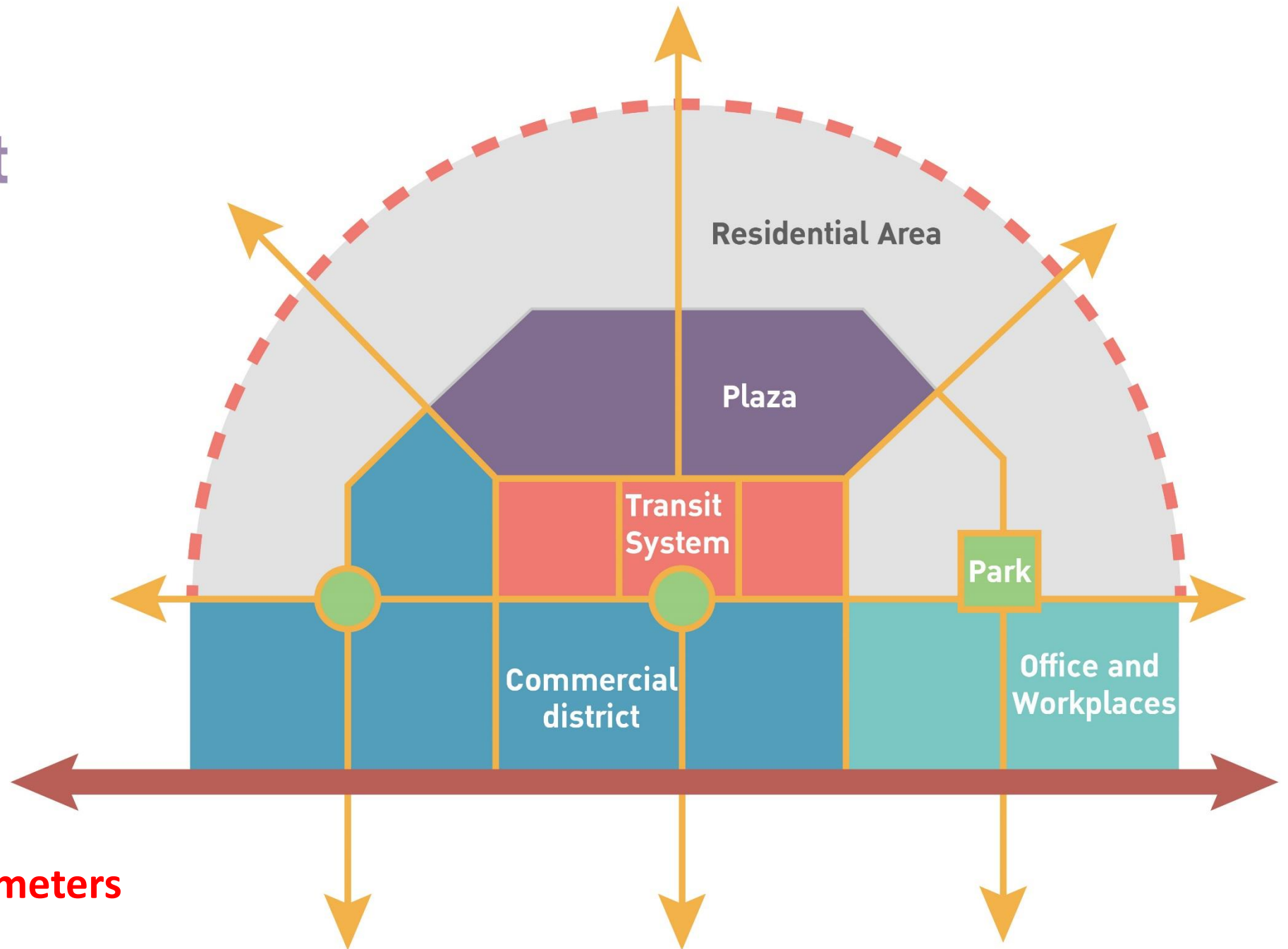
Golden Location



**SCG
Chemical**



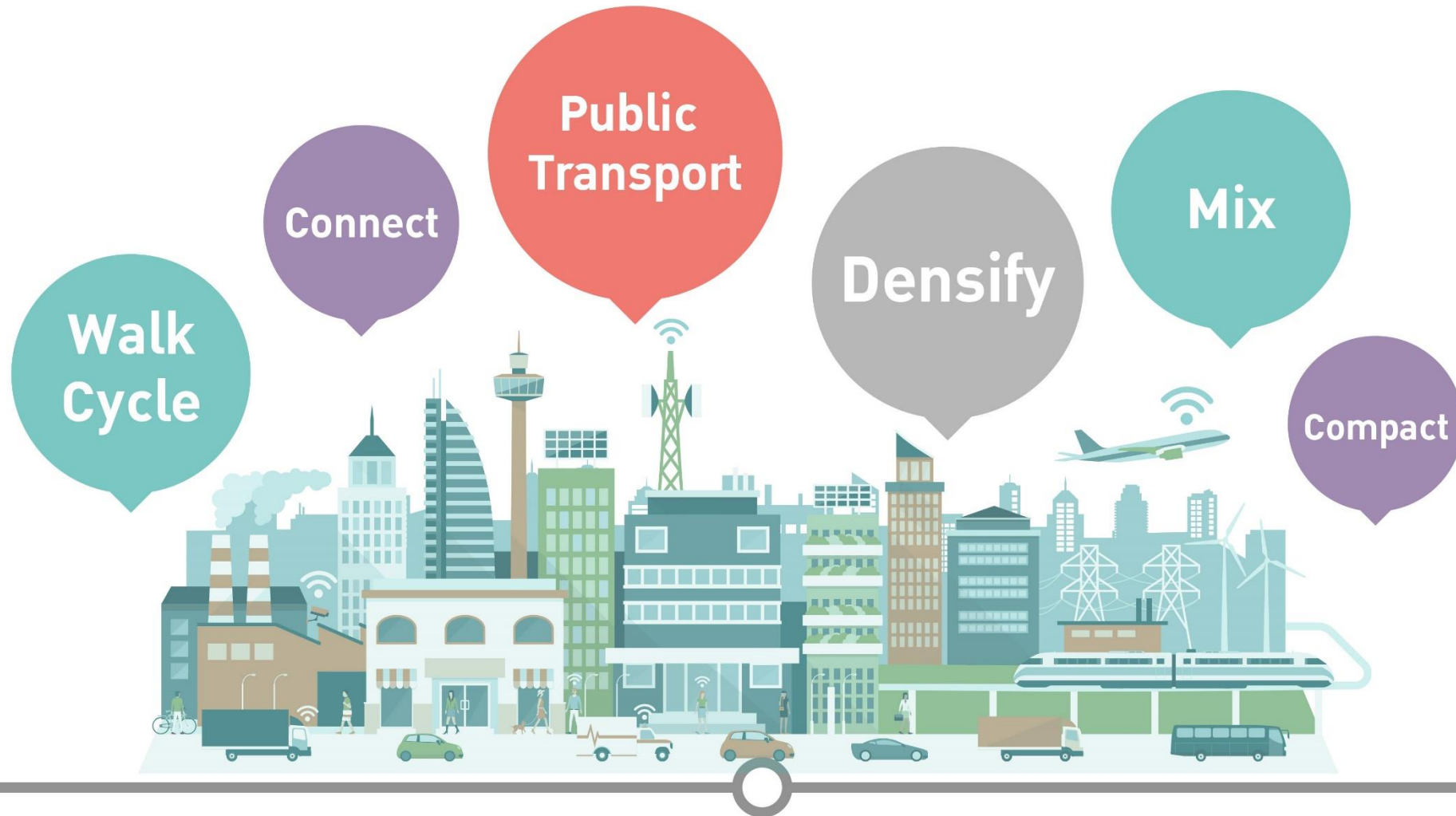
TOD Concept



Radius 400 meters

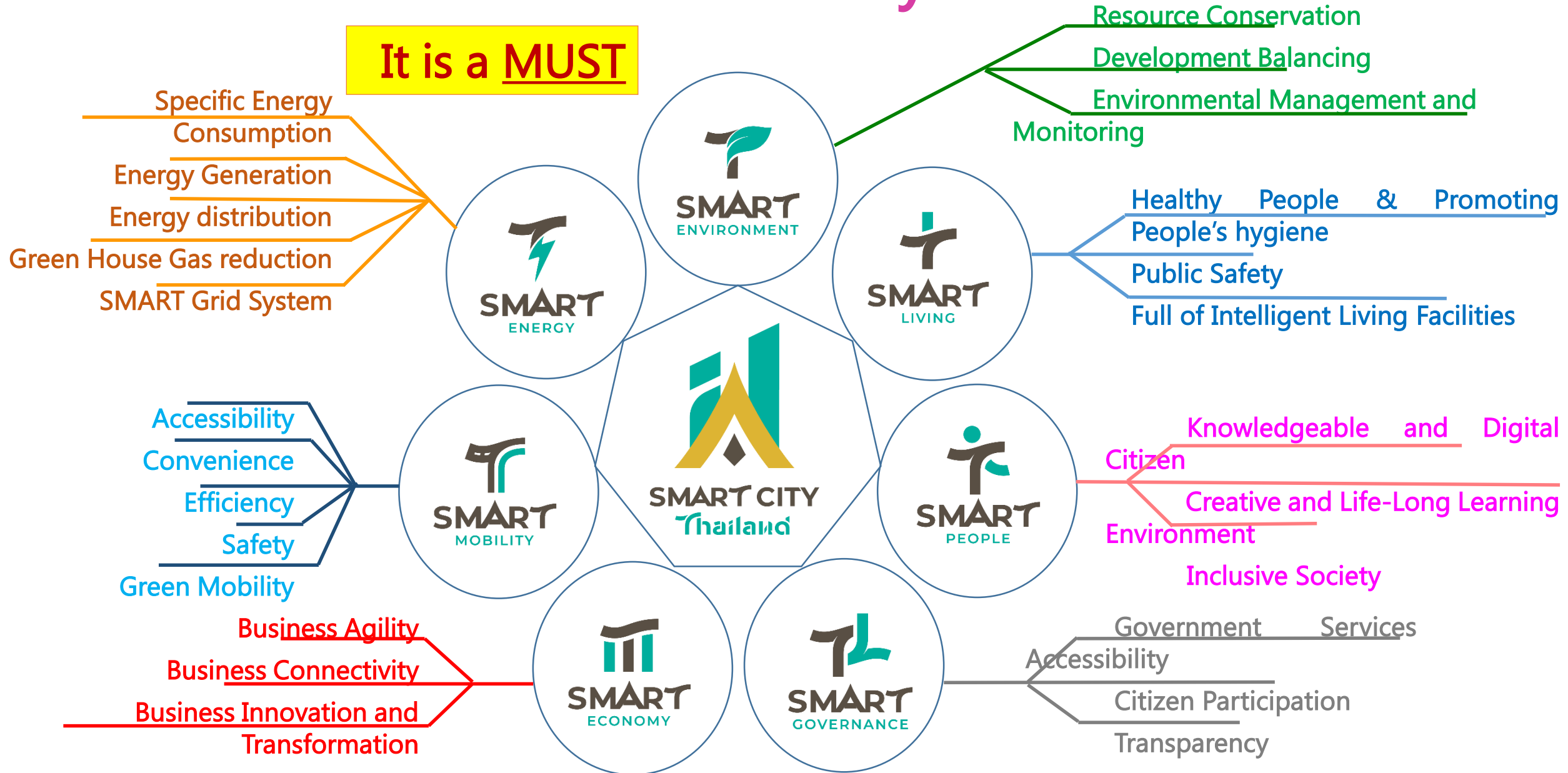
TOD & SMART CITY

Empowering Land around the Grand Station



Pahonyothin Transport Center

Criteria of Thailand Smart City



Vision



Bang Sue Area = New CBD



PHASE 1: Grand Station Commercial and Office

2022 - 2024

**Smart Business Complex,
Shopping Mall**

2022 - 2024

Smart Business Complex

2024

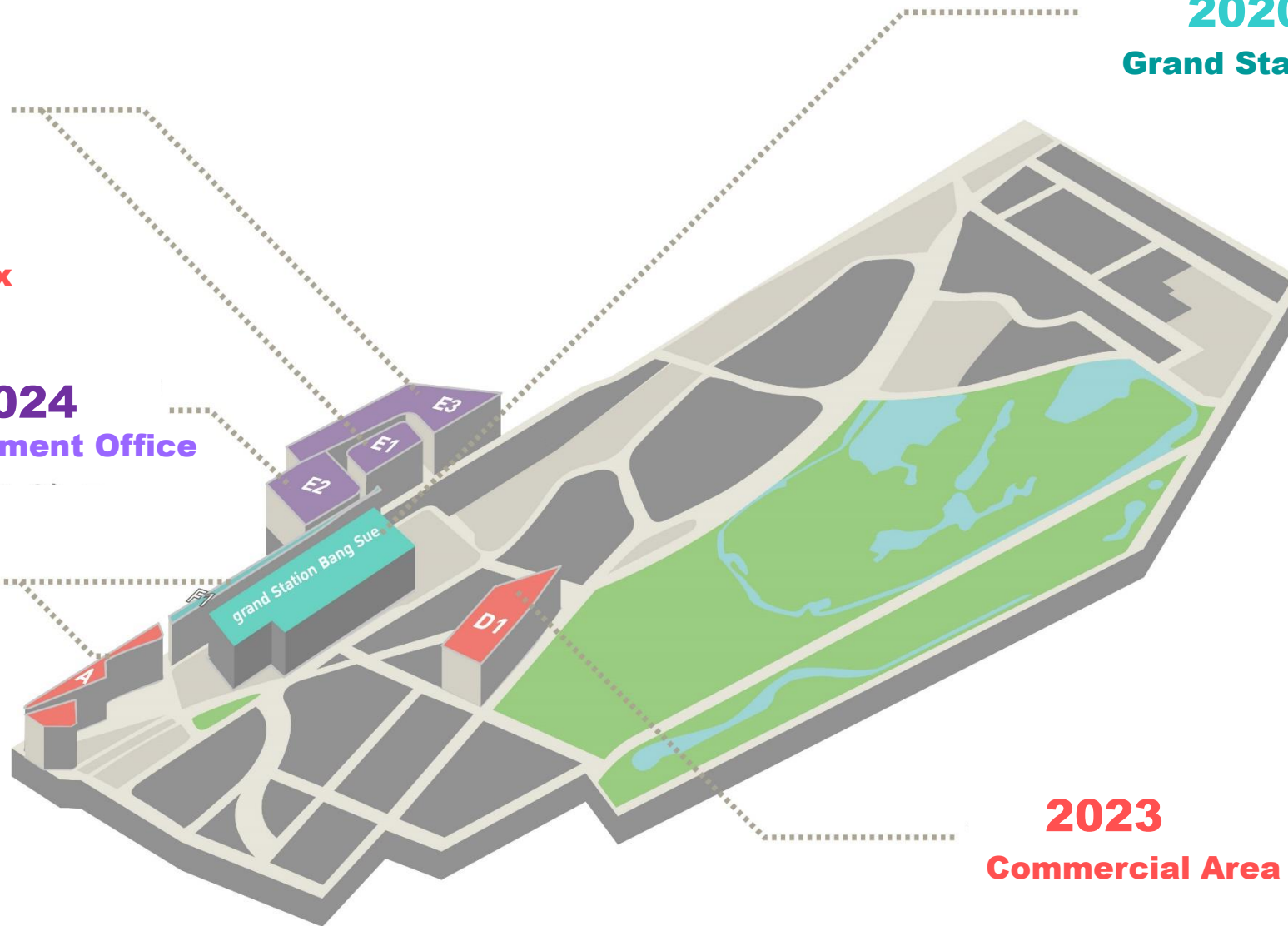
Government Office

2020

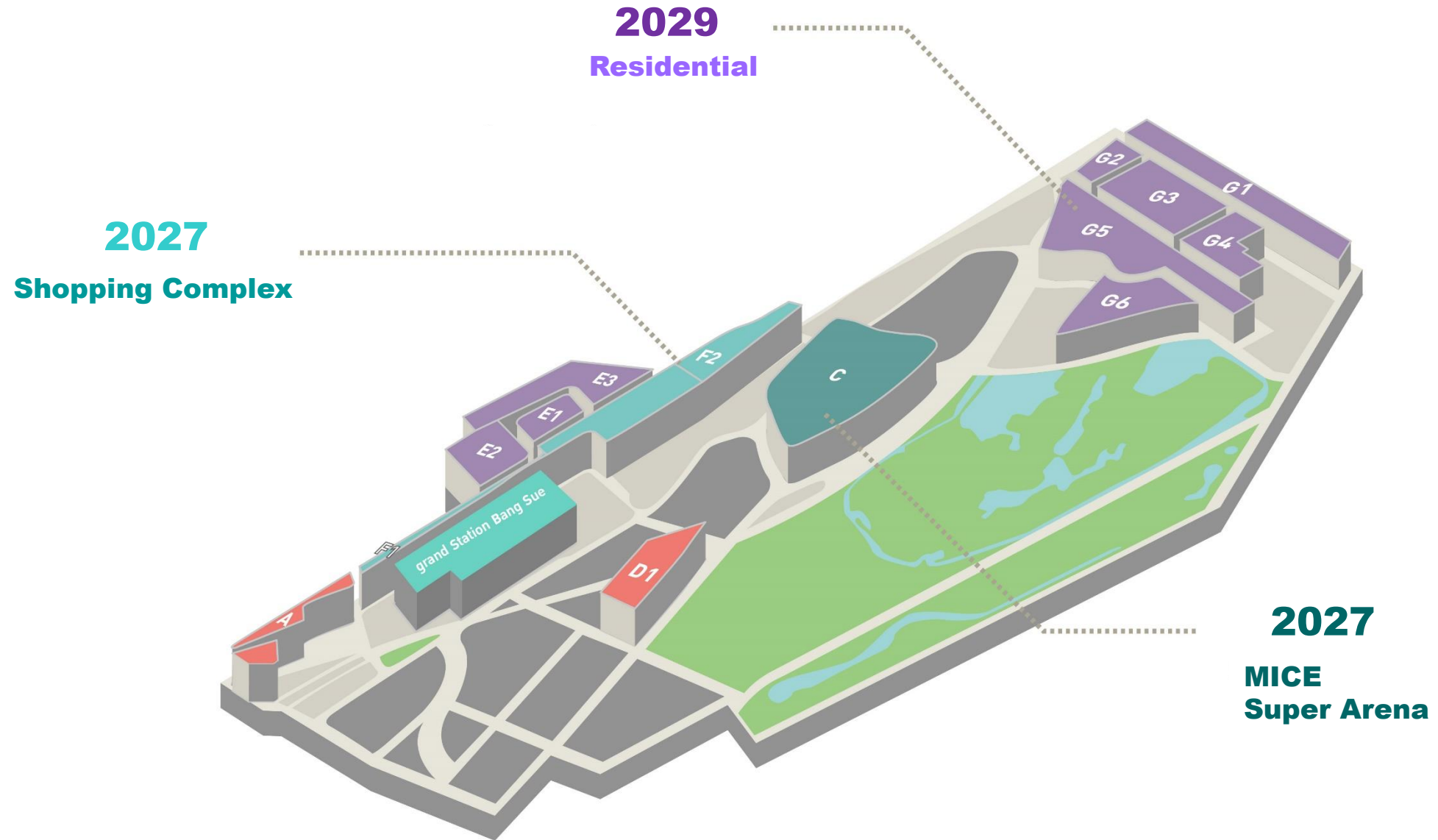
Grand Station

2023

Commercial Area



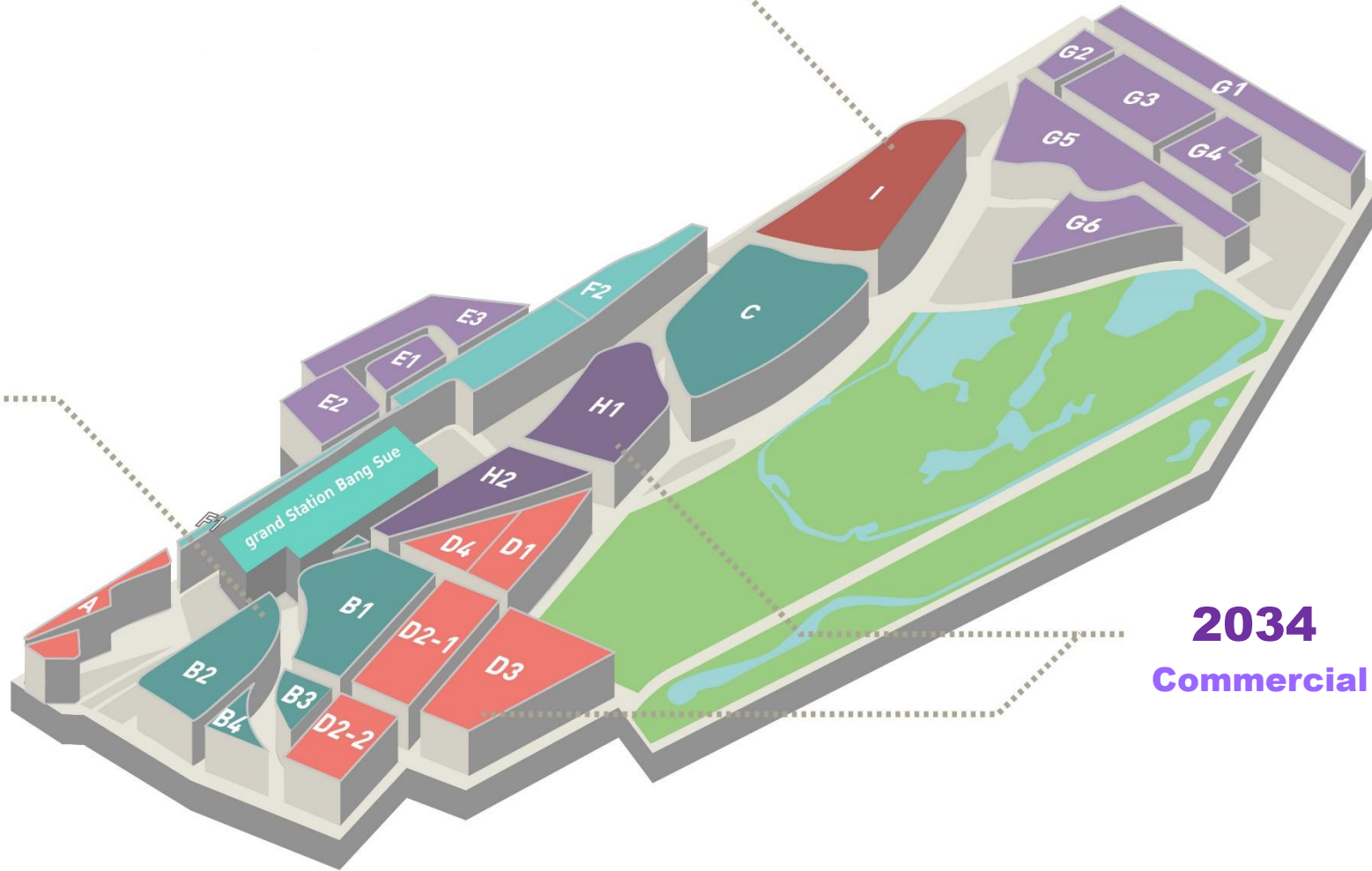
PHASE 2: MICE , Super Arena , Shopping Mall Residential



PHASE 3: Commercial Area Residential

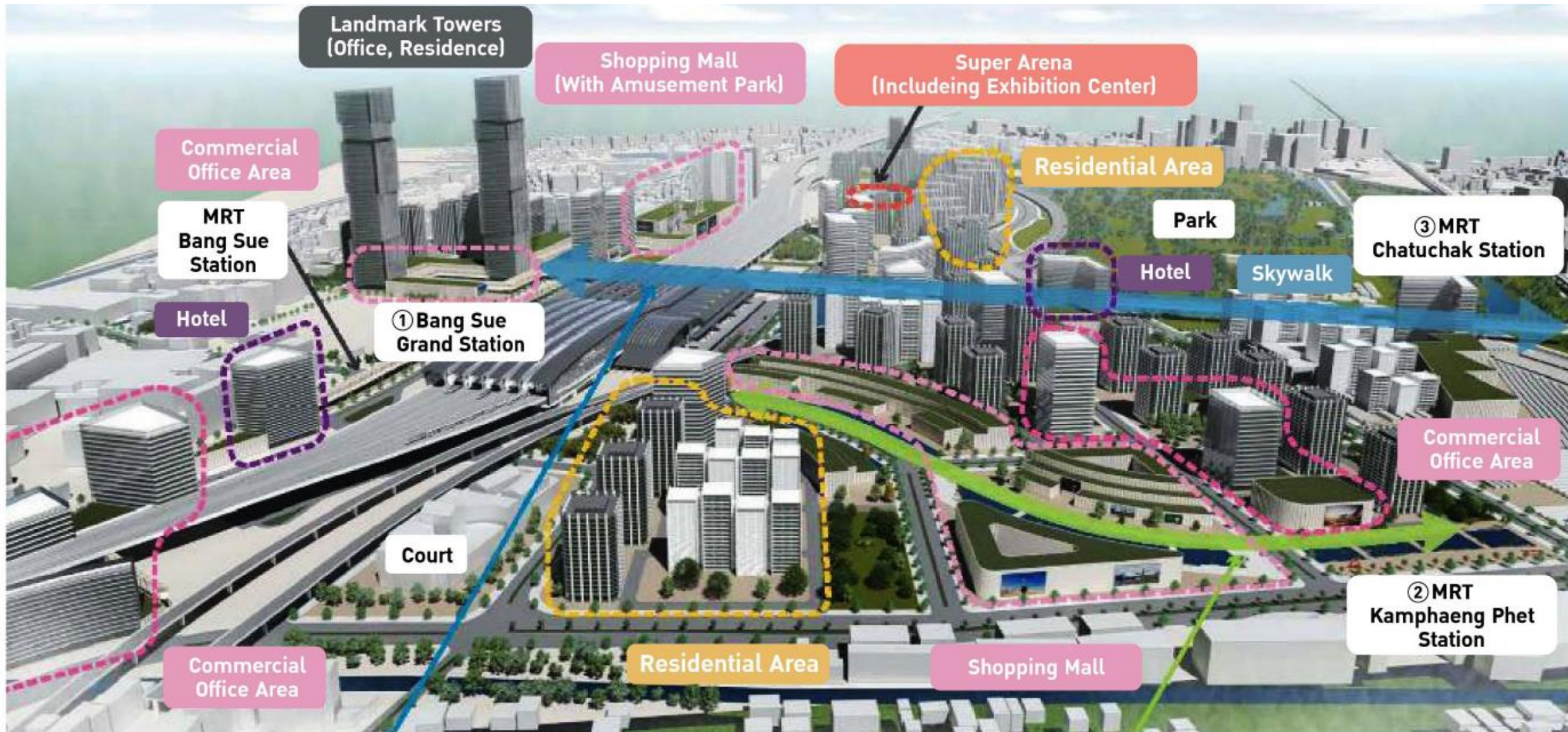
2032
Residential

2033
**ASEAN Commercial &
Business Hub**



2034
Commercial Area

Bang Sue : Smart City



Skywalk connects Office Towers and stations (① ③)

Two stations (① ②) are connected each other through Shopping Mall and water path