

## (1) Ventilation to Prevent Buildup of Carbon Monoxide



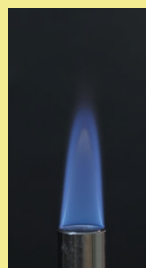
### Danger

As concrete dwellings are more airtight than wooden ones, their natural ventilation is not as effective.

Using gas appliances in an inadequately ventilated room can lead to a deficiency of oxygen and a dangerous buildup of poisonous carbon monoxide.

To prevent carbon monoxide buildup, please ensure adequate ventilation.

### gas combustion examples



excess air



optimum



insufficient air

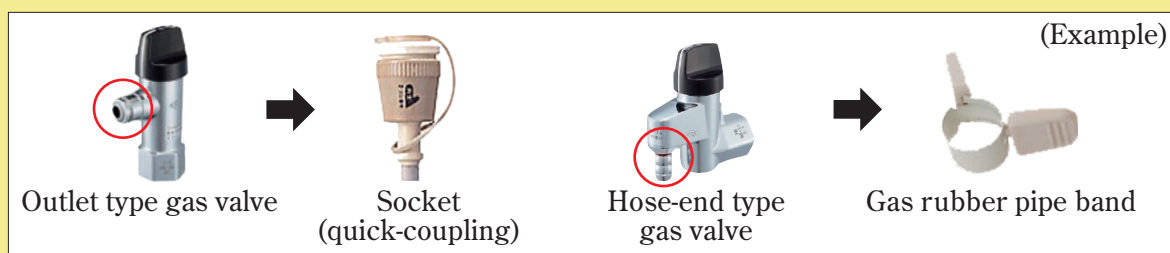
Buildup of rust and soot on gas appliances is a cause of incomplete combustion. Please ensure that your appliances are in good working order.

## (2) Points For Safe Gas Appliance Use

Please read the instructions before using the gas appliance and use them accordingly.

In addition, the shape of the gas valve installed at each residence differs. When using gas appliances, please note that you will need to prepare your own connection devices (gas soft cord, socket, rubber pipe stopper, etc.) according to the shape of the gas valve.

Be sure to close the gas valve when not using the gas. However, if the gas valve does not have a knob, there is no need to open or close it.



### ◆ Ventilation ◆

When you use any combustion appliance, you must ventilate to prevent carbon dioxide from permeating the room. To do this, you open the windows occasionally. For your information, using the ventilation fan or the range hood fan in the kitchen gives the most effective ventilation (if your apartment has an air inlet opening for ventilation of the kitchen, do not close the air inlet opening).

Please be informed that for installing an instantaneous gas water heater or a stove burner, installation of a ventilation fan is mandated by Building Standard Law (Article 28.3). Also be informed that there are limitations for the installation in accordance with Fire Prevention Ordinance and the like. For more information, contact the shop where you purchased the equipment.

You can install the instantaneous gas water heater only if you submit the request for improvement of your apartment. Before doing so, be sure to review the specifications required by UR. (refer to page 37)

### ◆ Gas Leak Detectors ◆

There is a gas detector built into the intercom (or the intercom with telephone function). If there is a gas leak in the kitchen, an alarm will sound both inside and outside the apartment to alert you of the problem.

The installation of a gas detector (or the lease of a gas detector from a gas company) is your responsibility.

### ◆ If you notice a gas leak ◆

- ◎ If you know the source of the leak, turn off the gas tap and open all the windows immediately.
- ◎ If you do not know the source of the leak, open all the windows immediately and turn off the main gas valve in the meter box.



- If you notice a leak at night, do not panic or turn on a light or a ventilation fan! A spark from the switch could ignite any gas present.

### ◆ How to reset the micro-computer-controlled gas meter ◆

In the event of an earthquake with an intensity of 5 or greater, or any other emergency, the safety system is activated and the micro-computer-controlled meter automatically cuts off the flow of gas. If you cannot resume the gas supply, follow the procedure below for inspection and restoration.

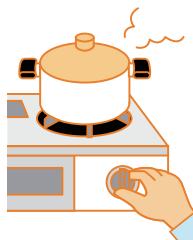
- \* In case of gas smell, do not attempt to restore the flow of gas. Open all the windows and doors of your apartment and contact a gas company.

#### Procedure for resetting micro-computer-controlled gas meter (ordinary type)

**1**

**Turn off all the indoor and outdoor gas equipment.**

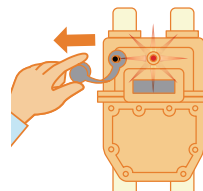
\* Do not close the gas meter cock.



**2**

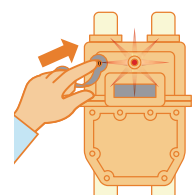
**Remove the cap of the reset button.**

\* Note that some meters do not have caps.



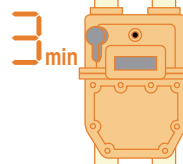
**3**

**Firmly press the reset button until it stops, and then release it.**  
Next, put the cap back on the button.



**4**

**Wait for about 3 minutes. When the red light stops flashing, it is safe to use the gas.**



During the 3 minutes of red-light-flashing, the meter checks whether it is safe to use the gas. If there are no problems, the light stops flashing and the gas is restored.

If the light continues flashing for more than 3 minutes, make sure no equipment is turned-on and try again.